

MANHEIM INDIANAPOLIS HEAVY TRUCK AUCTION

OPEN TO THE PUBLIC • WEDNESDAY, October 16th

• 10:00 A.M. EST •

OVER 350+ UNITS



GROUP OF 2013 PETERBILT 579s

Cummins ISX15 450hp w/engine brake, 13 speed transmission, 70" unibilt sleeper, 12,350# fronts, 38,000# rears on air ride suspension, air slide 5th wheel, APU, cruise control, A/C, CD player, power windows and locks, all aluminum wheels, dual high back air ride seats, heated and power mirrors, 235" WB



GROUP OF 2014 INTERNATIONAL PROSTARS

Cummins ISX15 485hp w/engine brake, Automatic transmission, 56" high rise sleeper, 12,350# fronts, 40,000# rears on air ride suspension, air slide 5th wheel, A/C, power steering, power windows and locks, tilt/tele wheel steering, outside aluminum wheels, APU, dual high back air ride seats, CD player, 215" WB



2016 FREIGHTLINER CASCADIA

Detroit DD15 455hp w/engine brake, 10 speed transmission, 72" raised roof double bunk sleeper, 12,000# fronts, 40,000# rears on air ride suspension, air slide 5th wheel, A/C, dual high back air ride seats, heated and power mirrors, cruise control, outside aluminum wheels, 226" WB



2015 INTERNATIONAL PROSTAR

Navistar N13 450hp w/engine brake, 10 speed transmission, 73" high rise sleeper, 12,350# fronts, 40,000# rears on air ride suspension, air slide 5th wheel, A/C, cruise control, dual high back air ride seats, heated and power mirrors, 235" WB



2016 PETERBILT 579

Paccar MX13, 455hp w/engine brake, 72" unibilt, double bunk, Ultrashift transmission, air slide 5th wheel, 12,500# fronts, 40,000# rears on air suspension, dual high back air ride seats, power windows and locks, tilt/tele wheel, 23" WB



2013 PETERBILT 386

Paccar MX13 455hp w/engine brake, 13 speed transmission, 70" mid-roof sleeper, 12,000# fronts, 36,000# rears on air ride suspension, air slide 5th wheel, A/C, dual high back air ride seats, power windows and locks, tilt/tele wheel steering, cruise control, 242" WB



2013 KENWORTH T660 DAYCAB

Paccar MX, 455hp w/engine brake, 10 speed transmission, air slide 5th wheel, 12,000# front, 40,000# rears on air suspension, air ride driver seat, CD player, cruise control, all aluminum wheels, 190" WB



2018 VOLVO VNL64T670

Volvo D13 425hp w/engine brake/I-shift transmission, 61" high roof double bunk sleeper, 12,350# fronts, 38,000# rears on air ride suspension, air slide 5th wheel, aluminum outside wheels, CD player, cruise control, power steering, heated & power mirrors, dual high back air ride seats, 220" WB



2006 PETERBILT 387

CAT C15 w/engine brake, 18 speed transmission, 70" high roof sleeper w/double bunk, 12,000# fronts, 36,000# rears on air ride suspension, air slide 5th wheel, A/C, cruise control, power windows and locks, tile/tele wheel, outside aluminum wheels, dual high back air ride seats, 235" WB



PUBLIC: VISIT TRUCK-AUCTION.COM FOR PRE-SALE LISTS AND BIDDING
DEALERS: FOR PRE-SALES AND BIDDING VIA SIMULCAST - VISIT MANHEIM.COM

PUBLIC AND DEALER BIDDING AVAILABLE ON-SITE & ON-LINE !!!



2008 VOLVO VNL64T300

Volvo D13 405hp w/engine brake, 10 speed transmission, 12,000# fronts, 38,000# rears on air ride suspension, air slide 5th wheel, A/C, power steering, heated and power mirrors, power windows and locks, 162" WB



2009 STERLING LT9500

MBE 4000 410hp w/engine brake, automatic transmission, Triax cab & chassis, 20,000# fronts, 46,000# rears, airlift push axle, P.T.O., dual high back seats, A/C, 275" WB



2013 FREIGHTLINER CA125SLP

Cummins ISX 425hp w/engine brake, 10 speed transmission, single axle day cab, 12,000# fronts, 23,000# rears on air ride suspension, stationary 5th wheel, A/C, cruise control, CD player, 166" WB



2008 FREIGHTLINER COLUMBIA

MBE 4000 450hp w/engine brake, 13 speed transmission, Cormach 16600E3 hydraulic knuckle boom. 14,110# max, 195" WB



2015 INTERNATIONAL DURASTAR

IHC Maxxforce 270hp, automatic transmission, day cab, stationary 5th wheel, 12,000# fronts, 20,000# rears on spring suspension, A/C, power windows and locks, power steering, 151" WB



2016 PETERBILT 579

Paccar MX13 430hp w/engine brake/automatic transmission, 96" Aero-condo w/double bunk, 14,320# fronts, 23,000# rears on air ride suspension, 22ft reefer box with swing door and air lift, tag axle, APU, dual high back air ride seats, heated and power mirrors, power windows and locks, CD player, A/C, 272" WB



Remarketing by Element

2012 INTERNATIONAL TERRASTAR

Maxxforce, automatic transmission, 12' box w/rollup doors on spring suspension, dual high back seats, power windows & locks, cd player, cruise, tilt/tele wheel 156" WB



GROUP OF 2018 GMC G3500s

Vortec 6.0L automatic, 16ft box w/roll up door and ramp, spring suspension, A/C, power steering, steel wheels.



2017 INTERNATIONAL 4300

Cummins engine, automatic transmission, 17,500# rears on spring suspension, 26' box w/rollup door & lift gate, air ride driver seat, cruise control, 254" WB

WIDE VARIETY OF INVENTORY !!!



2004 PETERBILT 320
Cat w/ Allison automatic transmission, 21ft garbage bed, 18,000# fronts, 44,000# rears, P.T.O, cruise control, A/C, air brakes, 170" WB



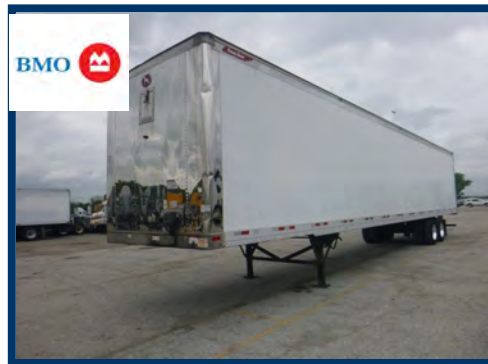
1997 FORD LOUISVILLE
Cat, 8LL transmission, 25ft flatbed w/palfinger forkcrane, air lift tag axel, 2 outriggers, P.T.O., 14,600# fronts, 40,000# rears, power steering, A/C, wet kit, 208" WB



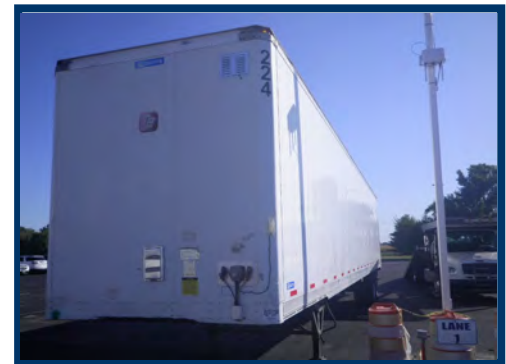
GROUP OF 2016 UTILITY REEFERS
Carrier Reefer Units, 53 x 102, air ride, sliding tandems, swing doors



PAIR OF 2017 UTILITY REEFERS
53' x 102", Thermo King units, air ride suspension, slide tandems, swing doors.
****Low Hours****



2017 GREAT DANE DRY VAN
53' x 102", air ride suspension, air slide, all aluminum wheels, new outside tires, swing doors



2013 STOUGHTON DRY VAN
53' x 102," air ride suspension, sliding tandems, steel wheels, swing door



2011 GREAT DANE DRY VAN
53' x 102", air ride suspension, sliding tandems, swing door, steel wheels



2011 REITNOUER CURTAINSIDE
48' x 102", 2 airlift pusher axles, air ride suspension, all aluminum outside wheels



2012 WILSON 53' X 102" LIVESTOCK TRAILER
Double decker, tandem ramp, air suspension