

MANHEIM INDIANAPOLIS HEAVY TRUCK AUCTION



OPEN TO THE PUBLIC • WEDNESDAY, APRIL 17th
• 10:00 A.M. EST •



OVER 350+ UNITS



GROUP OF 2006 KENWORTH T800s

Cat C15 475HP w/ engine brake, 10 speed transmission, 36" aero cab, 12,000# front, 40,000# rears on 4 air bag suspension, air slide 5th wheel, A/C, air ride driver seat, power window, heated mirrors, CD player, tilt steering, all aluminum wheels, cruise control, 3.70 ratio, 210" WB



2015 KENWORTH T680

Paccar 1700/500HP w/engine brake, 13 speed transmission, 76" double bunk aero cab sleeper, 13,200# front axle, 40,000# air slide 5th wheel, aluminum wheels, dual high back air ride seats, power windows & locks, tile/tele, cruise control, CD player, 240" WB



2010 KENWORTH T660 DAY CAB

Cummins ISM/425hp w/engine brake, ULTRASHIFT transmission, Day Cab, 12,000# front axle, 34,000# rears on air suspension, stationary 5th wheel, dual high back air ride seats, aluminum wheels, power & heated mirrors, power windows, A/C, power locks, cruise control, tilt/tele steering. **EXTRA CLEAN TRUCK!! ONLY 385K MILES!!**



2008 PETERBILT 388

Cummins ISX w/engine brake, 10 speed transmission, wet kit, 60" single bunk sleeper, 12,000# front axle, 38,000 rears on air ride suspension, air slide 5th wheel, dual high back air ride seats, power windows & locks, tilt/tele, cruise control, 260" WB



2013 FREIGHTLINER CASCADIA

Detroit DD15/455hp w/engine brake, 10 speed transmission, 72" Raised Roof sleeper, double bunk, 12,000# front axle, 40,000# rears on air ride suspension, air slide 5th wheel, 3.42 ratio, dual high back air ride seats, tilt/tele, cruise control, 235" WB



2012 PETERBILT 587

Paccar MX13 455HP w/ engine brake, 13 speed transmission, 70" high roof with double bunk, 12,000# fronts, 40,000# rears on air ride suspension, air slide 5th wheel, A/C, dual air ride high back seats, power windows & locks, power & heated mirrors, CD player, tilt steering, all aluminum wheels, 238" WB



2012 INTERNATIONAL PROSTAR

IHC Maxxforce/450hp w/engine brake, 10 speed transmission, 73" High Rise Sleeper Cab, 12,350# front axle, 40,000# rears on air ride suspension, air slide 5th wheel, dual high back air ride seats, power windows and locks, tilt/tele, cruise control, 235" WB



2011 PETERBILT 386

Paccar 455hp, EATON FULLER ULTRASHIFT, UNIBILT 70" single bunk sleeper bunk, 12,000# front axle, 40,000# rears on air ride suspension, air slide 5th wheel, aluminum wheels, dual high back air ride seats, power windows & locks, tilt/tele, cruise control, CD player, 248" WB



2013 KENWORTH T700

Paccar w/engine brake, 10 speed transmission, 75" AERODYNE double bunk sleeper, 12,350# front axle, 40,000# rears on air ride suspension, air slide 5th wheel, aluminum wheels, dual high back air ride seats, power windows & locks, tilt/tele, cruise control, 235" WB



PUBLIC: VISIT TRUCK-AUCTION.COM FOR PRE-SALE LISTS AND BIDDING
DEALERS: FOR PRE-SALES AND BIDDING VIA SIMULCAST - VISIT MANHEIM.COM

PUBLIC AND DEALER BIDDING AVAILABLE ON-SITE & ON-LINE !!!

Remarketing by Element



2013 PETERBILT 587

Paccar HP w/engine brake, 13 speed transmission, 70' high roof double bunk sleeper, 12,000# front axle, 40,000# rears on air ride suspension, air slide 5th wheel, aluminum wheel, dual high back air ride seats, power windows & locks, CD player, cruise control, 244" WB.
ONLY 349K MILES!



2014 KENWORTH T680

Cummins ISX 400HP w/ engine brake, 13 speed transmission, 72" Aero cab, 12,000# front, 40,000# rears on air ride suspension, air slide 5th wheel, dual high back air ride seats, power and heated mirrors, power windows & locks, A/C, CD player, tilt/tele steering, cruise control, aluminum outsides wheels, 3.36 ratio, 240" WB



2012 FREIGHTLINER CASCADIA

Detroit DD15/455hp w/engine brake, 10 speed transmission, 72" Raised Roof Sleeper, 12,000# front axle, 40,000# rears on air ride suspension, air slide 5th wheel, APU, dual high back air ride seats, power windows & locks, 3.42 ratio, heated & power mirrors, tilt/tele, cruise control, 240" WB



2015 FREIGHTLINER CASCADIA

Cummins ISX/400hp w/engine brake, 10 speed transmission, 72" Double Bunk Raised Roof Sleeper, 12,000# front axle, 40,000# rears on air ride suspension, air slide 5th wheel, power windows & locks, dual high back air ride seats, heated & power mirrors, 2.47 ratio, tilt/tele, cruise control, 228" WB



2015 FREIGHTLINER CASCADIA

Cummins ISX 450HP w/ engine brake, 10 speed transmission, 72" raised roof sleeper double bunk, 12,000# fronts, 40,000# rears on air ride suspension, air slide 5th wheel, dual high back air ride seats, A/C, power windows & locks, heated & power mirrors, CD player, cruise control, LP 22.5 rubber, all aluminum wheels, 2.47 ratio, 228" WB



2013 KENWORTH T660

PACCAR 2010/455hp w/engine brake, 10 speed transmission, 72" AEROCAB double bunk, 13200# front axle, 40,000# rears on air ride suspension, air slide 5th wheel, aluminum wheels, dual high back air ride seats, power windows & locks, tilt/tele, cruise control, 250" WB.



2014 KENWORTH T800

Paccar MX13/455hp w/ engine brake, 10 speed transmission, 36" Aero cab sleeper, 13,200# fronts, 40,000# rears on air ride suspension, air slide 5th wheel, heated and power mirrors, power windows & locks, air ride driver seat, A/C, tilt steering, CD player, all aluminum wheels, cruise control, 3.42 ratio, 226" WB



2005 FREIGHTLINER CORONADO

Detroit 14.0L/470hp w/ engine brake, 13 speed transmission, 70" raised roof sleeper w/ double bunk, 12,000# fronts, 40,000# rears on air ride suspension, air slide 5th wheel, A/C, power windows & locks, CD player, heated & power mirrors, dual high back air ride seats, all aluminum wheels, tilt steering, 3.58 ratio, 260" WB



2012 KENWORTH T700

PACCAR MX13/450hp, w/ engine brake, 10 speed EATON FULLER transmission, 75" AERODYNE double bunk sleeper, 12,000# front axle, 40,000# rears on air slide suspension, air slide 5th wheel, dual high back air ride seats, power windows & locks, tilt/tele, cruise control, 232" WB

WIDE VARIETY OF INVENTORY!!!



2012 INTERNATIONAL PROSTAR

IHC Maxxforce/450hp, w/engine brake, 10 speed EATON FULLER transmission, 12,350# front axle, 40,000# rears on air ride suspension, air slide 5th wheel, 73" high rise double bunk, dual high back air ride seats, power windows & locks, tilt/tele, cruise control, 235" WB.



2016 WESTERN STAR 5700XE SLP

Detroit DD15 14.8L 400HP w/ engine brake, 12 speed automatic transmission, 13,300# fronts, 40,000# rears on air ride suspension, air slide 5th wheel, dual high back air ride seats, A/C, CD player, power windows and locks, power & heated mirrors, 2.41 ratio, 240" WB ONLY 113K! Still has warranty with wrecker service included!!



2012 INTERNATIONAL TERRASTAR FLATBED

IHC Maxxforce, automatic transmission, 16FT flatbed, 6,000# front, 13,500# rears on spring suspension, electric hydraulic brakes, A/C, tilt steering, CD player, cruise control, 228" WB, Only 157K miles!



2003 INTERNATIONAL 7400

International DT/466hp, eaton fuller transmission, 20' utility bed, crane, 2 outriggers, miller welder, rail lift, rail wheels, 14,000# axle, 40,000# rears, Hendrickson suspension, dual air ride seats, steel wheels, A/C, Cruise control, power mirrors, tilt/tele steering, 211" WB.



2016 FORD F350 XL

6.7L Powers troke, auto transmission, extended cab, cab & chassis, spring suspension, A/C, 4x4, tilt steering, 162" WB



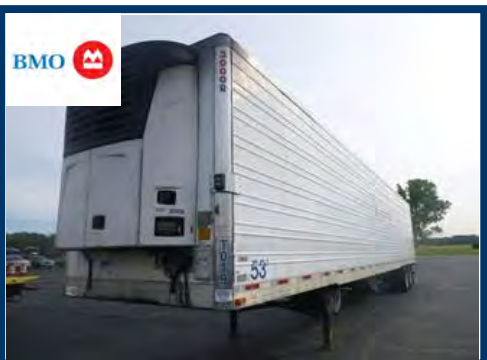
2011 INTERNATIONAL 7600

IHC Maxxforce 11 w/ engine brake, 10 speed transmission, 26ft Morgan box with roll up doors, Tandems, 14,000# fronts, 40,000# rears on spring suspension, A/C, CD player, power windows and locks, dual high back seats, air ride driver, tilt steering, cruise control, 278" WB, Only 56KMiles!



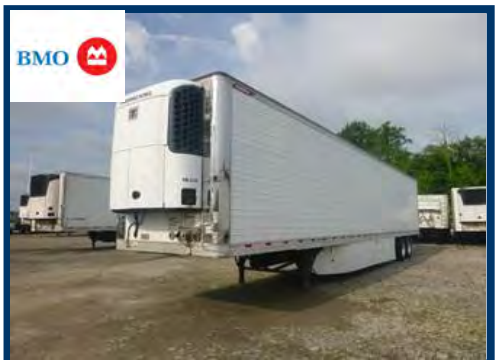
2) 2015 INTERNATIONAL 4300 REEFER BOX TRUCKS

IHC Maxxorce w/ automatic transmission, 12,000# front, 21,000# rears on air suspension, 22FT reefer box with Thermo king unit, Cold plate, roll up door, walking ramp, A/C, air brakes, tilt steering, cruise control, air ride driver seat, 240" WB



GROUP OF 2013 UTILITY REEFER TRAILERS

53' x 102", air ride suspension, Carrier Reefer Unit, sliding tandems, swing rear doors, 15,990 hours!!!!



2013 GREAT DANE REEFER TRAILER

53' x 102", air ride suspension, Thermo King Reefer Unit, sliding tandems, swing rear doors