

# MANHEIM INDIANAPOLIS HEAVY TRUCK AUCTION

OPEN TO THE PUBLIC • WEDNESDAY, December 12<sup>TH</sup>

• 10:00 A.M. EST •

Manheim

Indianapolis

## OVER 400+ UNITS

Remarketing by Element



### GROUP OF 2013 PETERBILT 587s

Cummins 450hp w/engine brake, 10 speed transmission, 76" sleeper, 12,000# front axle, 40,000# rears on air ride suspension, air slide 5th wheel, aluminum wheels, dual high back air ride seats, power windows & lock, tilt/tele, cruise control, 240" w.b. Mid 500k Miles!!!

Remarketing by Element



### GROUP OF 2015 INTERNATIONAL PROSTARS

IHC N13/ 450hp w/engine brake, 10 speed transmission, 73" High Rise sleeper, 12,000# front axle, 40,000# rears on air ride suspension, air slide 5th wheel, dual high back air ride seats, power windows & locks, heated & power mirrors, tilt/tele, cruise control, 232" w.b. 203k 250k, 303k, 326k for Miles!!!

Remarketing by Element



### GROUP OF 2012 KENWORTH T700s

Cummins ISX/455hp w/engine brake, 9 speed transmission, 75" Aerodyne sleeper, double bunk, 12,000# front axle, 40,000# rears on air ride suspension, air slide 5th wheel, dual high back air ride seats, aluminum wheels, power windows & locks, 3.55 ratio, heated & power mirrors, tilt/tele, cruise control, 235" w.b.

Remarketing by Element



### GROUP OF 2012 & 2013 VOLVO 670s

Cummins ISX/400hp w/engine brake, 10 speed transmission, 12,350" front axle, 40,000# rears on air ride suspension, air slide 5th wheel, aluminum wheels, dual high back air ride seats, power windows & locks, tilt/tele, cruise control, 224" w.b. 505k to 687k Miles!!!

Remarketing by Element



### GROUP OF (3) 2015 INTERNATIONAL LONESTARS

Cummins ISX/450hp w/engine brake, 13 speed transmission, 73" High Rise double bunk sleeper cab, 12,350# front axle, 40,000# rears on air ride suspension, air slide 5th wheel, dual high back air ride seats, 10 aluminum wheels, power windows & locks, refrigerator heated & power mirrors, tilt/tele, cruise control, 252" w.b. 366k 388k 426k Miles!!!

Remarketing by Element



### GROUP OF (4) 2012 KENWORTH T660s

Cummins ISX/425hp w/engine brake, 10 speed transmission, 72" Aerocab, 12,000# front axle, 40,000# rears on air ride suspension, air slide 5th wheel, aluminum wheels, dual high back air ride seats, tilt/tele, cruise control 234" w.b.

Remarketing by Element



### GROUP OF 2014 FREIGHTLINER CASCADIAS

Detroit DD15/455hp w/engine brake, 10 speed transmission, 72" Raised Roof Double Bunk sleeper, 12,000# front axle, 40,000# rears on air ride suspension, air slide 5th wheel, aluminum wheels, power windows & locks, 2.64 ratio, heated & power mirrors, tilt/tele, cruise control, 224" w.b. Only 403k & 478k Miles!!!

Remarketing by Element



### GROUP OF 2016 INTERNATIONAL LONESTARS

Cummins ISX/450hp w/engine brake, 13 speed transmission, 73" High Rise double bunk sleeper cab, 12,350# front axle, 40,000# rears on air ride suspension, air slide 5th wheel, dual high back air ride seats, 10 aluminum wheels, power windows & locks, refrigerator heated & power mirrors, tilt/tele, cruise control, 252" w.b. Only 357k, 370k Miles!!!

Remarketing by Element



### GROUP OF 2016 INTERNATIONAL PROSTARS

Cummins /400hp w/engine brake, 10 speed transmission, 73" High Rise sleeper, 12,000# front axle, 40,000# rears on air ride suspension, air slide 5th wheel, dual high back air ride seats, power windows & locks, heated & power mirrors, tilt/tele, cruise control, 228" w.b. 445k Miles!!!

Manheim

Indianapolis



**PUBLIC:** VISIT [TRUCK-AUCTION.COM](http://TRUCK-AUCTION.COM) FOR PRE-SALE LISTS AND BIDDING

**DEALERS:** FOR PRE-SALES AND BIDDING VIA SIMULCAST - VISIT [MANHEIM.COM](http://MANHEIM.COM)



# PUBLIC AND DEALER BIDDING AVAILABLE ON-SITE & ON-LINE !!!

Remarketing by Element



## GROUP OF 2013 PETERBILT 386s

Cummins ISX 425HP w/ engine brake, 10 speed transmission, 70" Unibilt sleeper, 12,000# front, 40,000# rears on air ride suspension, Air slide 5th wheel, A/C, power windows & locks, heated and power mirrors, dual high back air ride seats, 10 aluminum wheels, tilt steering, cruise control, 240" wb

PENSKE



## GROUP OF 2012 FREIGHTLINER CA125DCS

Detroit DD13/ 435HP w/ engine brake, 10 speed transmission, 12,350# front, 40,000# rears on air ride suspension, air slide 5th wheel, air ride drivers seat, A/C, power & heated mirrors, power windows and locks, tilt steering, cruise control, 178

PENSKE



## GROUP OF (8) 2012 FREIGHTLINER M2106s

Cummins ISB/220HP, 6 speed transmission, 12,000# front, 21,000# rears on spring suspension, 26FT box with swing doors, air ride high back drivers seat, heated & power mirrors, A/C, tilt steering, cruise control, 256" wb

BMO



## GROUP OF 2015 WESTERN STAR 4700SBs

Detroit DD13/470HP w/ engine brake, 10 speed transmission, 12,000# front, 40,000# rears on air ride suspension, air slide 5th wheel, A/C, high back air ride driver seat, power windows and locks, power & heated mirrors, tilt steering, cruise control, 10 aluminum wheels, 188" wb



## GROUP OF 2011-2012 INTERNATIONAL PROSTARS

IHC Maxxforce/450hp w/engine brake, 10 speed transmission, 73" High Rise Sleeper cab, 12,000# front axle, 40,000# rears on air ride suspension, air slide 5th wheel, aluminum wheels, power windows & locks, dual high back air ride seats, tilt/tele, cruise control, 240" w.b. 347k to 570k Miles!!!

ABSOLUTE



## GROUP OF (7) 2013 FREIGHTLINER CASCADIAS

Cummins ISX 450hp, 10 speed, 72in raised roof, 12,000# front, 40,000# rears on air suspension, air slide 5th wheel, dual high back air ride seats, heated & power mirrors, power locks and windows, A/C, tilt steering, 3.31 gear ratio, 230" wb. **RUNNING ABSOLUTE!!!**

ABSOLUTE



## 2009 PETERBILT 387 DAY CAB

Paccar engine, 12,000# front, 40,000# rears on air ride suspension, **RUNNING ABSOLUTE!!!**

Remarketing by Element



## 2016 FREIGHTLINER CASCADIA

Detroit DD15/475hp w/engine brake, 10 speed transmission, 72" Raised Roof Double Bunk sleeper, 12,000# front axle, 40,000# rears on air ride suspension, air slide 5th wheel, dual high back air ride seats, aluminum wheels, power windows & locks, 3.23 ratio, heated & power mirrors, tilt/tele, cruise control, 228" w.b. Only 383k Miles!!!

Remarketing by Element



## 2015 KENWORTH T680

Paccar MX13/455hp w/engine brake, 10 speed transmission, 76" High Roof Double Bunk sleeper, 12,000# front axle, 40,000# rears on air ride suspension, air slide 5th wheel, dual high back air ride seats, refrigerator, power windows & locks, 3.36 ratio, heated & power mirrors, tilt/tele, cruise control, 228" w.b. Only 365k Miles!!!



# WIDE VARIETY OF INVENTORY!!!

Remarketing by Element



## 2015 PETERBILT 579

Cummins ISX/450hp w/engine brake, 10 speed transmission, 80" Low Roof Sleeper, 13,200# front axle, 40,000# rears on air ride suspension, air slide 5th wheel, dual high back air ride seats, 10 aluminum wheels, dual exhaust, power windows & locks, tilt/tele, cruise control, 258" w.b.



## 2013 VOLVO VNL64T 670

Volvo VE-D13/475hp w/engine brake, I-Shift transmission, 12,500# front axle, 38,000# rears on air ride suspension, air slide 5th wheel, dual high back air ride seats, aluminum wheels, power windows & locks, 3.25 ratio, heated & power mirrors, tilt/tele, cruise control, 226" w.b.

Remarketing by Element



## 2016 KENWORTH T680

Cummins ISX/450hp w/engine brake, 13 speed transmission, 76" High Roof double bunk sleeper, 13,200# front axle, 40,000# rears on air ride suspension, air slide 5th wheel, dual high back air ride seats, aluminum wheels, power windows & locks, heated & power mirrors, tilt/tele, cruise control, 226" w.b. Only 385k miles!



## 2014 KENWORTH T660

Cummins ISX15/400 hp w/engine brake, 13 speed transmission, 86" Studio Sleeper, 13,200# front axle, 38,000# rears on air ride suspension, air slide 5th wheel, aluminum wheels, dual high back air ride seats, tele/tilt, cruise control.



## 2006 PETERBILT 379

Caterpillar C-13, 10 Speed Transmission, 12,000# front axle, 36,000# rears on air ride suspension, air slide 5th wheel, Aluminum wheels, PTO, tilt/rele, cruise control.



## 2013 VOLVO VNL64T780

Volvo D13/455HP, I/Shift Transmission, 77" Double Bunk, 13,200# front axle, 38,000# rears on air ride suspension, air slide 5th wheel, aluminum wheels, dual high back air ride seats, APU, tilt/tele, cruise control



## 2013 FREIGHTLINER CASCADIA

Detroit DD15/455hp w/engine brake, 10 speed transmission, 72" Raised Roof sleeper, 13,200# front axle, 40,000# rears on air ride suspension, dual fuel tanks air slide 5th wheel, power windows, tilt/tele, cruise control, 228 wb



## 2012 FREIGHTLINER CASCADIA

Detroit DD13/435hp, w/engine brake, 10 speed transmission, 12,000# front axle, 40,000# rears on air ride suspension, air slide 5th wheel, tilt/tele, cruise control



## 2005 INTERNATIONAL 4300 CREW CAB CRANE TRUCK IHC DT466

6 speed transmission, air brakes, 12,000# front axle, 21,000# rear axle, spring suspension, wet kit, tilt/wheel, cruise control.

# PUBLIC AND DEALER BIDDING AVAILABLE ON-SITE & ON-LINE !!!



## 2003 INTERNATIONAL 7400

International DT466, 10 speed transmission, 14,000# front, 40,000# rears on Hendrickson suspension, PTO, 20ft utility bed, 2 outriggers, IMT crane, Miller welder, rail lift.



## 2013 FREIGHTLINER M2 REEFER BOX TRUCK

Cummins ISB/220 HP, automatic transmission, 12,000# front axle, 21,000# rear axle, spring suspension, 22' cold plate, swing rear doors, Thermo King reefer unit, tilt wheel, cruise control. 234 wb



## 2013 INTERNATIONAL 4300 BOX TRUCK

International MaxxForce Automatic Transmission, 10,000# front axle, 17,500 rear axle, air ride suspension, 26' box, rollup rear door, tilt/wheel, cruise control.



## 2012 FORD F350 CREW CAB FLAT BED TRUCK

Ford V8 gas, automatic transmission, spring suspension, 4x4, 8' flatbed, tilt/wheel, cruise control, 121k Miles!!!



## 2005 THOMAS SCHOOL BUS

Caterpillar C7/230hp, Allison Automatic Transmission, 13,200# front axle, 26,000# rear axle, put spring suspension, Steel Wheels, Horizontal Exhaust, Power Steering, Cruise Control.



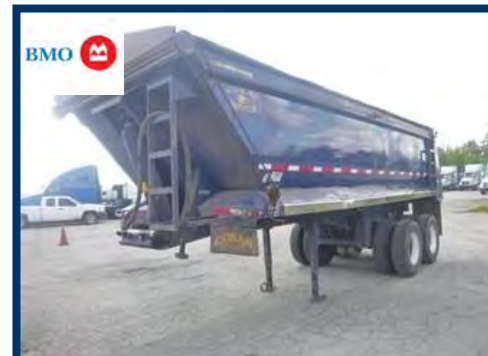
## 1998 CLARK FORK LIFT

Propane, 4,000# capacity, side shift, 3 stage mast, tank sold with unit!!!



## 1998 RAVENS 45'X102" COVERED WAGON TRAILER

45'x102', Air Ride Suspension, spread axle 8 aluminum wheels, tool boxes.



## GROUP OF 2018 CORA DUMP TRAILERS 21'X102"

air ride suspension, roll tarp.



## 2015 VANGUARD 53'X102"

Air suspension, sliding tandems, DRS tire inflation system, translucent roof, aluminum outer wheels